

Gasdruckfeder

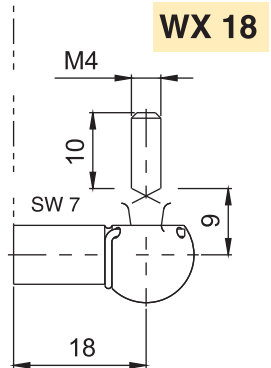
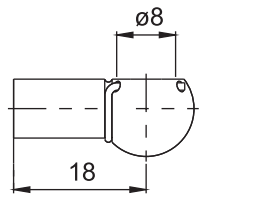
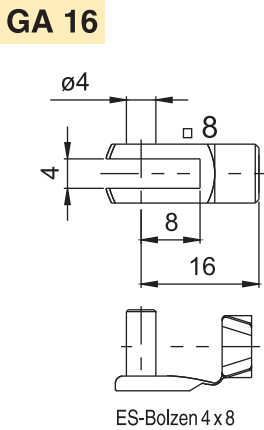
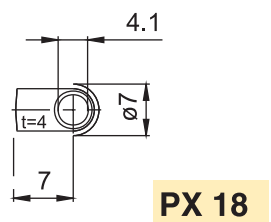
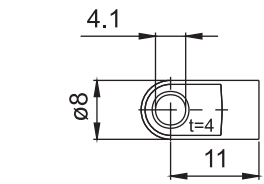
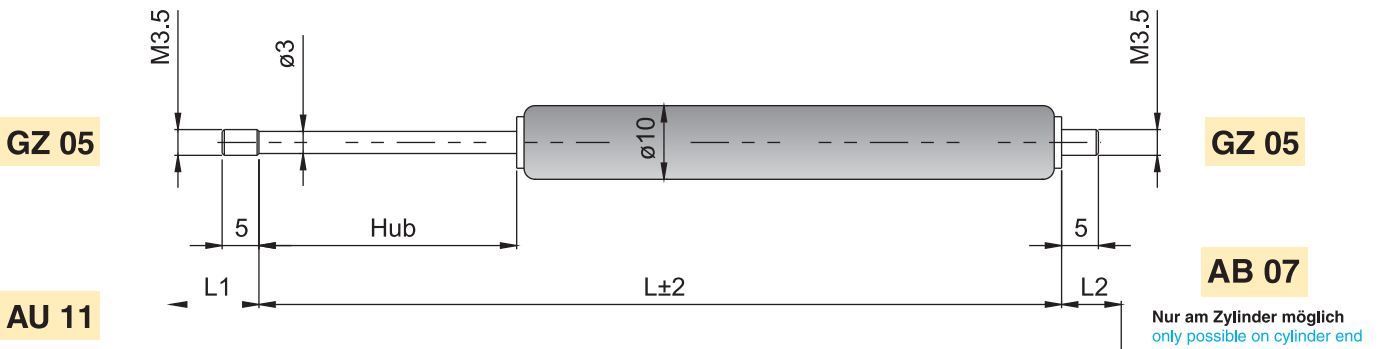
G 3-10

Gas spring

G 3-10

Ausschubkraft F1
 Extension force F1
Progression
 Progression
Kolbenstange
 Piston rod
Druckrohr
 Cylinder
Anschlüsse
 Fittings

5 - 100 Newton
 5 - 100 Newton
20 %
 20 %
Ø 3 mm Stahl rostfrei
 Ø 3 mm stainless steel
Ø 10 mm schwarz lackiert
 Ø 10 mm black spray coated
Stahl blau verzinkt
 steel zinc plated



Standardbaulängen, Details

Standard lengths, Details

Standardhübe H [mm] 10, 20, 30, 40, 50, 60, 70, 80
 Standard strokes

Standardlänge GL [mm] $L = 2 \times H + 32$
 Standard length $GL = L + L1 + L2$

Extras 5
 Extras 5

Bestellbeispiel

Order example

G03 10 0050 1 0150 AU11 AB07 50N
 G03 10 0050 1 0150 AU11 AB07 50N